



# Combine World Class 9-1-1 Technology with Superior GIS and ALI Data Management Services.

Improving and managing your data quality today and positioning your organization for NG9-1-1 requirements, is our focus. With 911 Datamaster, success begins before the call is made. Visit us at [911Datamaster.com](http://911Datamaster.com).

## Benefits

Utilizing our services:

- Better focuses resources to migrate to NG9-1-1.
- Can prepare your GIS data for use in a NG9-1-1 environment.
- Allows for a seamless migration to LDB and LVF / ECRF.
- Frees up local resources to conduct regular ongoing business.
- Handles today's transactions while preparing your data for tomorrow – all for less money than you are likely paying today.

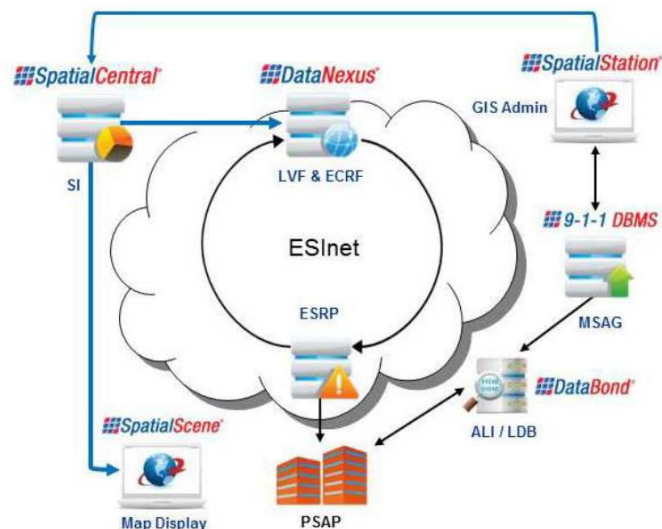
## Benefit from 911 Datamaster's industry leading software with hosted data management services.

911 Datamaster is a long-time industry leader in 9-1-1 and Next Gen 9-1-1 technology. We now offer our world class platforms as a managed service. Whether you are looking to upgrade your ALI database management to improve quality, control costs, and prepare for NG9-1-1 or desiring to prepare and maintain your GIS data to a quality level requisite for NG9-1-1 deployment, we have the resources and expertise to make you successful.

## Enable your GIS data for today's environment and prepare it for NG9-1-1.

Having accurate GIS or "spatial" data is a critical component in migrating to NG9-1-1. Even if you think you have good GIS data today, there could be numerous potential "gotchas" that may prevent your spatial data from reaching the level of quality necessary to facilitate location validation and call routing. 911 Datamaster is your partner in NG9-1-1 data management!

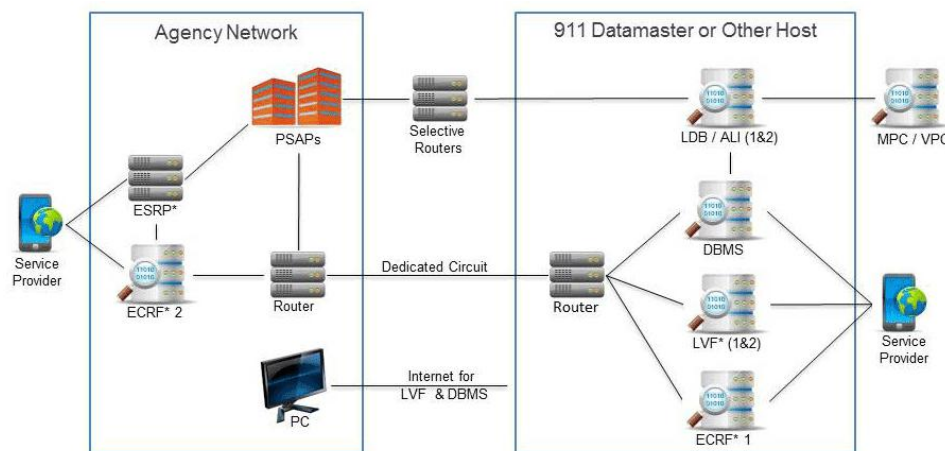
- **9-1-1 GIS Data Assessment** – We offer a basic initial assessment that can identify potential areas of concern within your data.
- **Advanced GIS QA / QC Analysis Tools** – **SpatialStation**® provides state-of-the-art GIS QA / QC capabilities for GIS layer specific reporting on data quality and completeness, as well as consistency with traditional 9-1-1 databases (ALI & MSAG).
- **GIS Support Staff** – Our GIS technicians can serve as subject matter experts for GIS data improvement projects when preparing for NG9-1-1. They can also provide ongoing support to fill your GIS data development needs or even supplement your existing GIS staff.



## Improve quality and control costs by letting us manage your ALI.

911 Datamaster has over 25 years of experience with database management and ALI software. With hundreds of installations throughout the U.S. and abroad, we have developed a deep knowledge of database management. We offer a simple migration from your incumbent provider to a state of the art, NG9-1-1 ready platform that can reside either on your premises or in our hosted environment. Service providers will send service orders directly to this platform where our analysts will help ensure data integrity. PSAPs can easily migrate to our geographically diverse ALIs with a few simple network changes.

- **DataBond®**, our DBMS and ALI applications, are NENA NG9-1-1 transitional compliant Location Database (LDB).
- Our LDB / ALI enables migration of your 9-1-1 system to NG9-1-1 with no changes to the underlying database or need for “fork-lift upgrades”.
- Traditional PSAPs and NG-capable PSAPs can utilize the same database.
- A web-based user interface ensures that you always have access to *your* data.



\* Optional. To be deployed as NG9-1-1 is implemented.

## Developing the data for LVF / ECRF is one of the first steps in NG9-1-1 migration.

Some often think of an ESInet (Emergency Service IP Network) as NG9-1-1. Connecting PSAPs through an IP network is not an ESInet unless you have a way to route 9-1-1 calls. The mechanism required to perform this function is the LVF / ECRF (Location Validation Function / Emergency Call Routing Function). Our technology and services can turn your IP network in to a true ESInet.

- **DataNexus®**, our LVF / ECRF, meets all NENA standards for validation and routing. It can be deployed with our trained analysts providing the data reconciliation required to build an accurate database.
- **DataNexus®** and **SpatialStation®** work hand-in-hand to integrate your GIS and MSAG data in to the call routing process.
- For multi-jurisdictional configurations, we offer **SpatialCentral®** to coalesce and QC multiple GIS data sources.
- Because a proper LVF / ECRF is a combination of GIS and MSAG data, our resources can be shared between ALI database management, GIS management, and LVF / ECRF management.
- Although each service offering can be deployed independently, there are data and processing synergies with a combined approach.

## The Time is Now...

The time to improve your data while controlling your costs is now. An initial GIS data assessment can be set up in a matter of days at minimal cost. A full transition of your database and data management can be carried out in as little as three to six months, with no downtime or service interruption. 911 Datamaster has already performed these transitions for numerous sites and is ready to help you get started with your NG9-1-1 future.